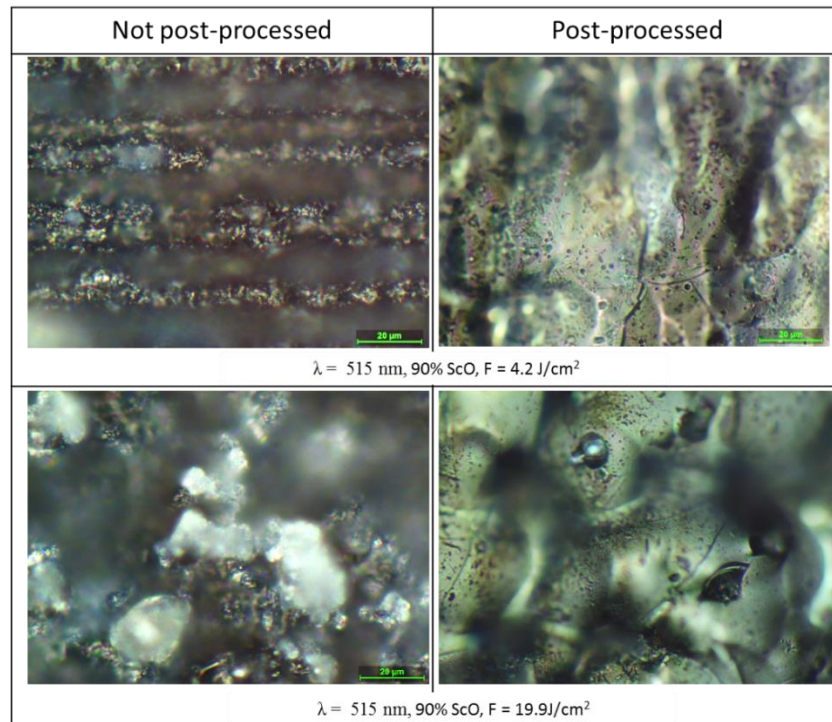
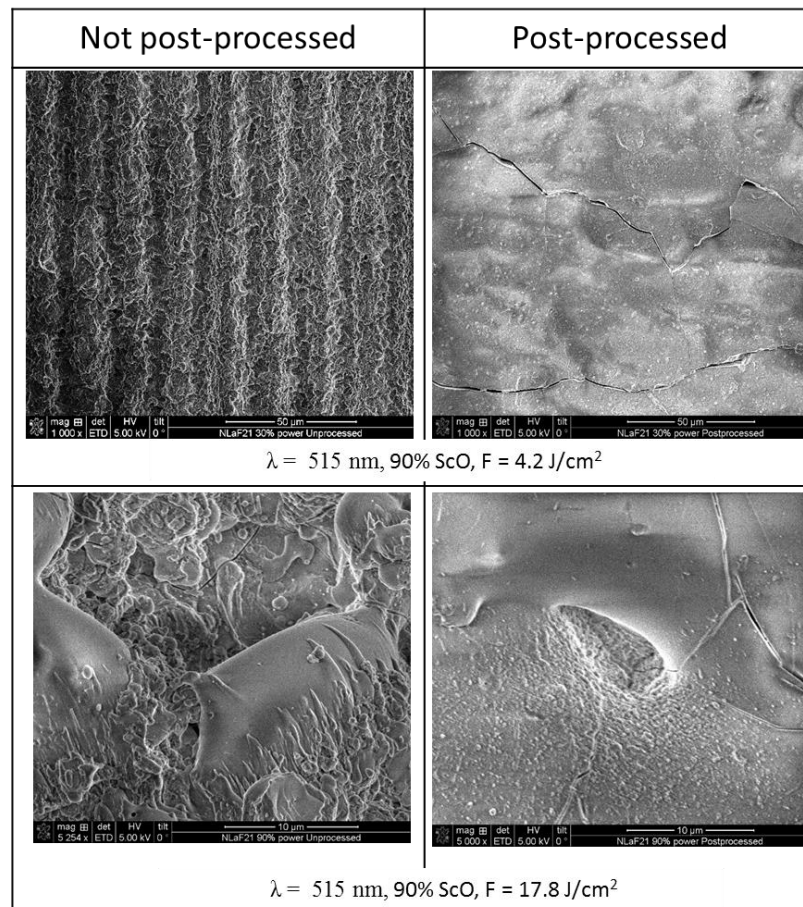


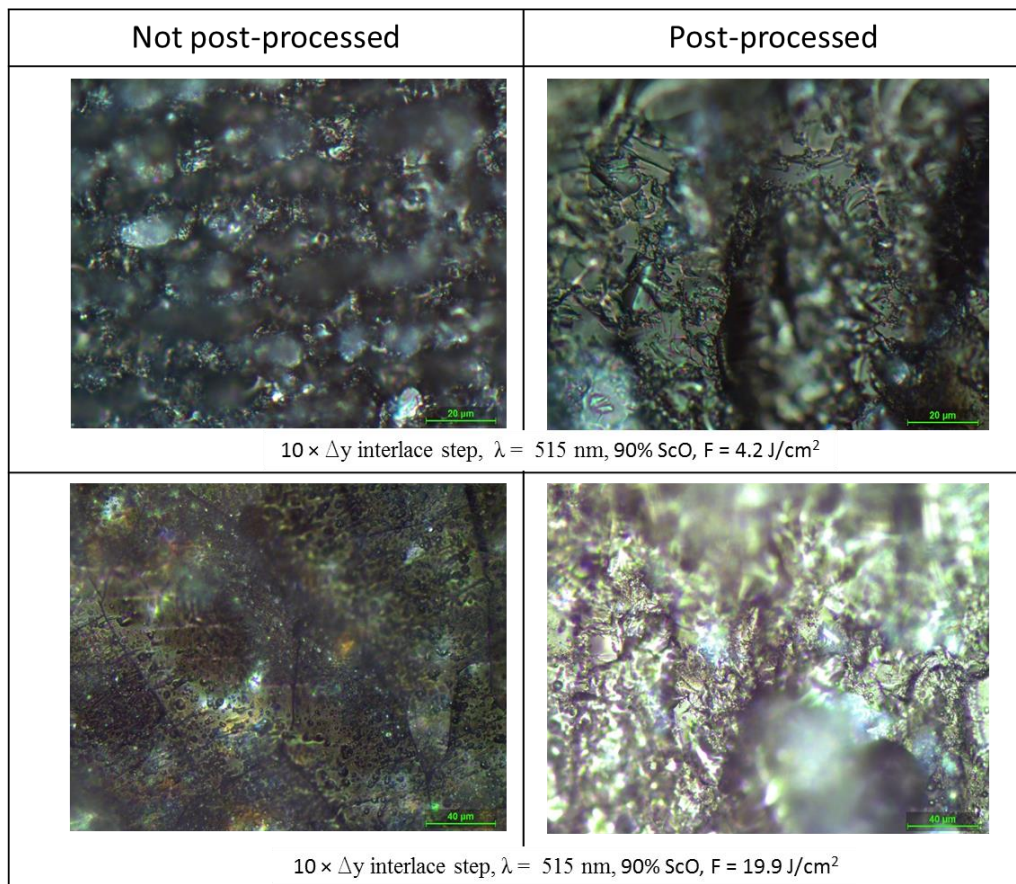
Appendix B - Microscope and SEM images of N-LaF21 and S-TiH53



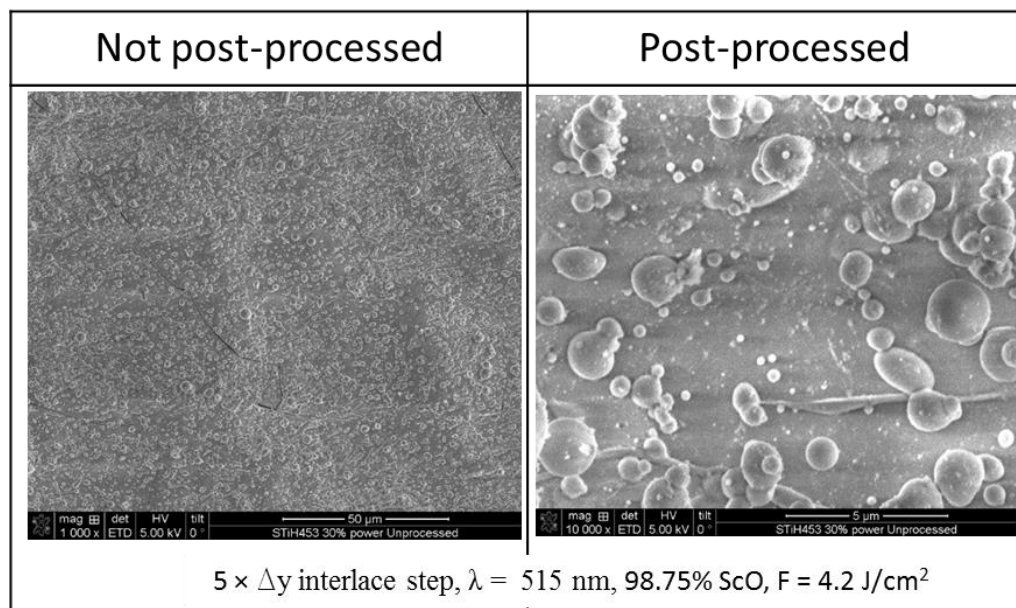
Appendix B.1. Microscope (Leica) images of N-LaF21



Appendix B.2. SEM images of N-LaF21



Appendix B.3. Microscope (Leica) images of S-TiH53



Appendix B.4. SEM images of S-TiH53

The effect of the smoothing post process on N-LaF21 and S-TiH53 are given in Appendix B. These microscope and SEM images show that the smoothing post process caused the surface to melt and caused cracks on the surface.